

Oddizzi World Explorers

KS1 Week 9 - Weather and climate



Login details

To access online resources please go to www.oddizzi.com/schools/login

Oddizzi subscribers: Use your oddizzi class login and password.

Map skills

Watch a weather report for today on the news or online.

How is the weather different across the country? Draw the different types of weather on a **Blank outline map of the UK**. If you completed a weather report in week 3, how does your weather report this week compare? If they are different, why do you think this might be?

Online investigator



Login to www.oddizzi.com and click on *explore the world - weather and climate - seasons - guess the season*

Look through the photos. Can you guess which season they were taken in?

Use these images to help you draw how the trees would look in different seasons on your **How seasons change** sheet.

Quiz time

Login to www.oddizzi.com.

Click on **Quiz** at the top of the page. Find the **Weather and climate** quiz. We suggest trying **Level 1**.

See how many points you can score! Can you better your score from last time?

Putting pen to paper

Login to www.oddizzi.com and click on *explore the world - weather and climate - weather - weather and jobs*

Look at the images on the page and think about how each one would be affected by different types of weather. Choose three jobs from the images and explain how they would be affected on your **Jobs affected by the weather** sheet.

What if...

Discuss this made up scenario with your family over breakfast or dinner.

What if...it snowed all year round?



Outdoor explorer

Use your daily walk to see whether you can find clues that tell you which season we are in right now. Tick off the clues on your **Season explorer scavenger hunt** sheet. You could also complete the **Weather and seasons I spy** sheet while you are outside too!

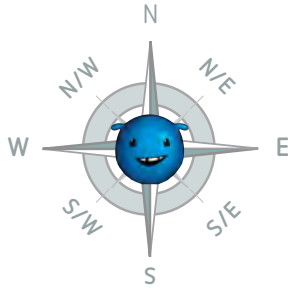
Read it

Read the guided reading text **Hot Places** (Year 1) and **Cold Places** (Year 1).

You might like to read this with an adult.

Once you have finished, answer the questions.

The United Kingdom

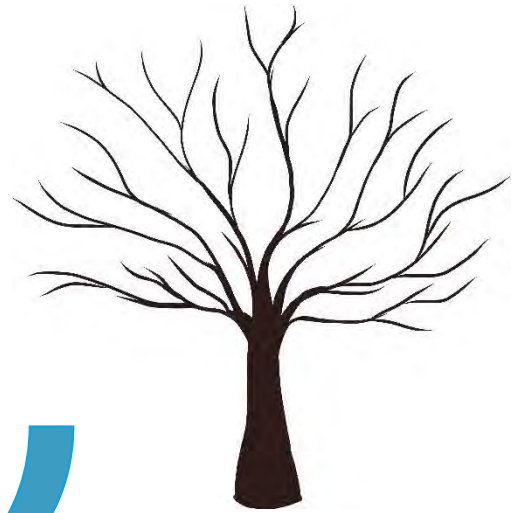
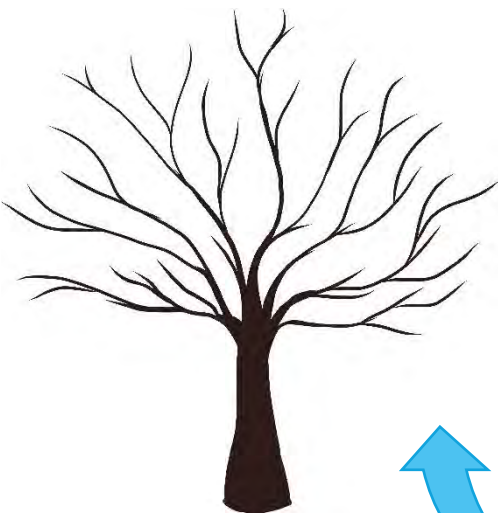
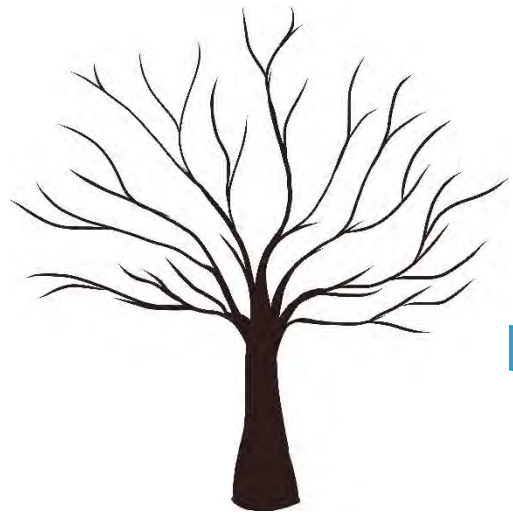
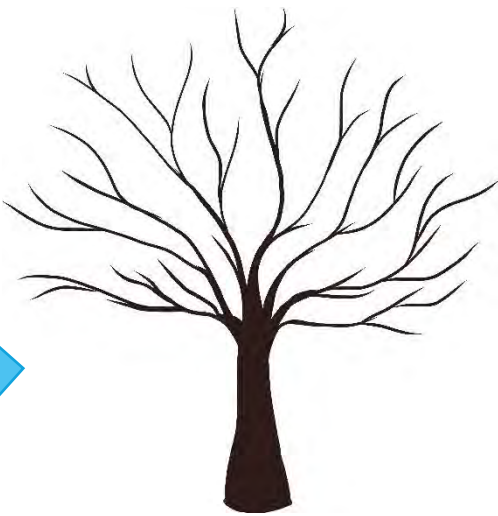




How Seasons Change

Spot the differences between the seasons.

Autumn



freezing	cloudy	rainy	hot	windy
sunny	frosty	warm	misty	cold

freezing	cloudy	rainy	hot	windy
sunny	frosty	warm	misty	cold

freezing	cloudy	rainy	hot	windy
sunny	frosty	warm	misty	cold

freezing	cloudy	rainy	hot	windy
sunny	frosty	warm	misty	cold

freezing	cloudy	rainy	hot	windy
sunny	frosty	warm	misty	cold

freezing	cloudy	rainy	hot	windy
sunny	frosty	warm	misty	cold



Jobs affected by the weather

Explore how the weather affects different jobs.



Builder



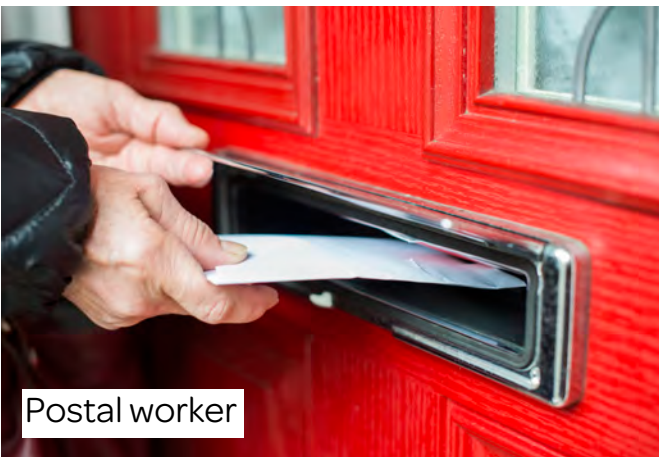
Farmer



Fisherman



Ice cream seller



Postal worker



Taxi driver



Teacher



Pilot



Jobs affected by the weather



Explore how the weather affects different jobs.



Season Explorer Scavenger Hunt

Find clues to decide which season we are in.

I can see...	Tick
Autumn	
Red or orange leaves	
Leaves on the ground	
Acorns	
Windy weather	
Winter	
Snow	
Fog	
Trees without leaves	
Gloomy weather	
Spring	
New flowers	
Rain	
Daffodils	
Buds	
Summer	
Sunshine	
Daisies	
Flowers	
Green leaves	

Discuss with a partner what season you think it is.



Weather and Seasons I Spy

Find clues to decide which season we are in.

I spy...	Tick	Where is it?
A place where rain water collects		
Something that changes colour in autumn		
Somewhere that doesn't get wet		
A place where snow needs to be removed		
A good place to build a snowman		
Something that is moved by the wind		
A place where new plants grow		
Something that can be knocked down by the wind		
A place where flowers grow		
A place to shelter from the rain		
A place to find shade from the sun		
Somewhere an icicle could grow		

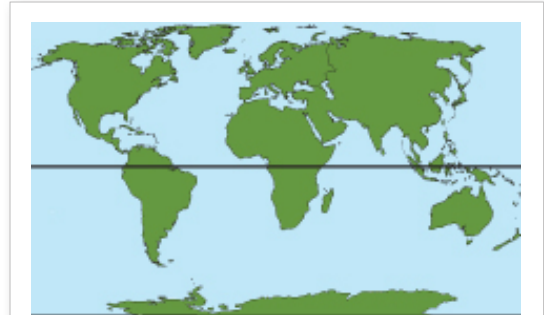


Draw the weather outside now

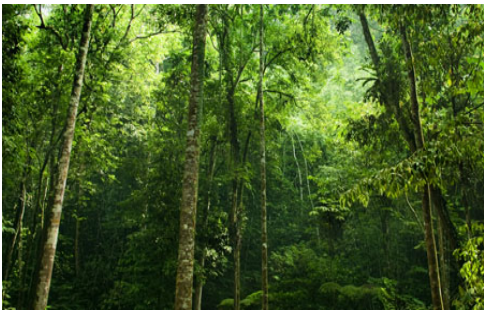
The hottest places on Earth are found near to the Equator.

The Equator is an invisible line that splits the Earth into two halves.

It is halfway between the North Pole and the South Pole.



A map showing the Equator



Rainforest

Rainforests, deserts and savannas are all close to the Equator.

These are all hot.



Sahara Desert

Rainforests are hot and wet places. They're perfect for all kinds of life.

Hot deserts have very dry weather. Very few plants and animals can stay alive in deserts.



Savanna

Savannas are sometimes wet, sometimes dry.

They are grasslands: home to elephants, lions and zebras.

Key words:

deserts

Equator

invisible

rainforests

savannas

Guided Reading – Hot Places Discussion Sheet

Before Reading – Prediction activity

Ask your students these questions before and after reading the text. Have students skim the text to help with prediction before reading.

Statement	Before	Reading	After	Reading
	Yes	No	Yes	No
A. Based on the pictures, you are going to read about cold places.				
B. The North Pole is a hot place.				
C. Rainforests are hot places.				
D. Penguins live in hot places.				

During Reading – Help with pronunciation, understanding and decoding.

After Reading – Have students complete the following activities on an erasable white board or on a blank sheet of paper. Students should share responses after each question. You can document responses below.

1. Where is the Equator found on Earth?
2. Find one word in the text that is used to describe a desert.
3. Write a new word you have learned in this text. (Check spelling)
4. Draw an animal that lives in a savanna.

Notes:

HOT PLACES

Finish the sentences.

1. The hottest places on Earth are found near to the

_____.

2. The Equator is half way between the North Pole and

_____ Pole.

Tick the answer.

3. Which is **NOT** a hot place?

Rainforest

Savanna

Antarctica

Sahara Desert

4. Which of these words describes a rainforest?

Wet

Snowy

Dry

Cold

Answer the question below.

5. What would you find in a savanna? _____

Tell Odd one thing you know about hot places.





HOT PLACES

1. Draw lines to fix the broken sentences.

The hottest places on Earth	that splits the Earth into two halves.
The Equator is an invisible line	elephants, lions and zebras.
Savannas are home to	are found near to the Equator.

2. Name three types of hot places.

3. The capital letters and full stop are missing. Put them back in.

the equator is halfway between the north pole and the south pole

4. Choose a word from the box to finish the sentences.

invisible savannas deserts equator

_____ are sometimes wet and sometimes dry.

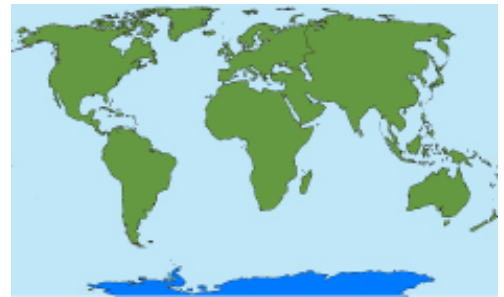
Some _____ have very hot, dry weather.

Both the Arctic and Antarctic are very cold places.

The Arctic can be found on the top of a globe.

Antarctica is on the bottom. This continent surrounds the South Pole.

The North Pole is in the Arctic. Here, ocean is covered by thick ice.



World map with Antarctica in blue



The Arctic Ocean is covered in ice

Arctic countries include the USA (Alaska), Canada, Norway and Russia.

Antarctica is the coldest place on Earth.



Fur seals on the ice

The sun doesn't come up for six months in this continent! This is Antarctica's winter.

Giant lumps of ice that float in the cold sea around Antarctica are called icebergs.



Special clothing to keep warm

On land, very few plants grow in Antarctica.

People live in lots of cold places. They find special ways to keep warm.

Key words:

Arctic

Antarctic

continent

float

icebergs

surround

Guided Reading – Cold Places Discussion Sheet

Before Reading – Prediction activity

Ask your students these questions before and after reading the text. Have students skim the text to help with prediction before reading.

Statement	Before	Reading	After	Reading
	Yes	No	Yes	No
A. Based on the pictures, you are going to read about hot places.				
B. The Arctic is a cold place.				
C. Icebergs are found in cold places.				
D. Very few plants grow in cold places.				

During Reading – Help with pronunciation, understanding and decoding.

After Reading – Have students complete the following activities on an erasable white board or on a blank sheet of paper. Students should share responses after each question. You can document responses below.

1. Where are really cold places found on the globe?
2. Name a country near the Arctic.
3. Write a new word you have learned in this text. (Check spelling)
4. Ice that floats in the ocean is called what?

Notes:

COLD PLACES

Finish the sentences.

1. The Arctic and Antarctic are very _____ places.
2. The _____ Pole is in the _____.

Tick the answer.

3. Which of these is not an Arctic country?

Canada	<input type="checkbox"/>	Australia	<input type="checkbox"/>
Norway	<input type="checkbox"/>	Russia	<input type="checkbox"/>

4. Antarctica is the _____ place on Earth.

coldest	<input type="checkbox"/>	wettest	<input type="checkbox"/>
hottest	<input type="checkbox"/>	busiest	<input type="checkbox"/>

Answer the question below.

5. Where is it dark for six months? _____

Tell Odd one thing you know about cold places.





COLD PLACES

1. Draw lines to fix the broken sentences.

The Arctic can be found	are called icebergs.
Antarctica is the	on the top of a globe.
Giant lumps of ice that float	coldest place on Earth.

2. Name four things you would pack if you were visiting a cold place.

_____	_____
_____	_____

3. The capital letters and full stop are missing. Put them back in.

the north pole is in the arctic

4. Choose a word from the box to finish the sentences.

covers surrounds continent float

Antarctica _____ the South Pole.

Icebergs _____ in the cold sea.