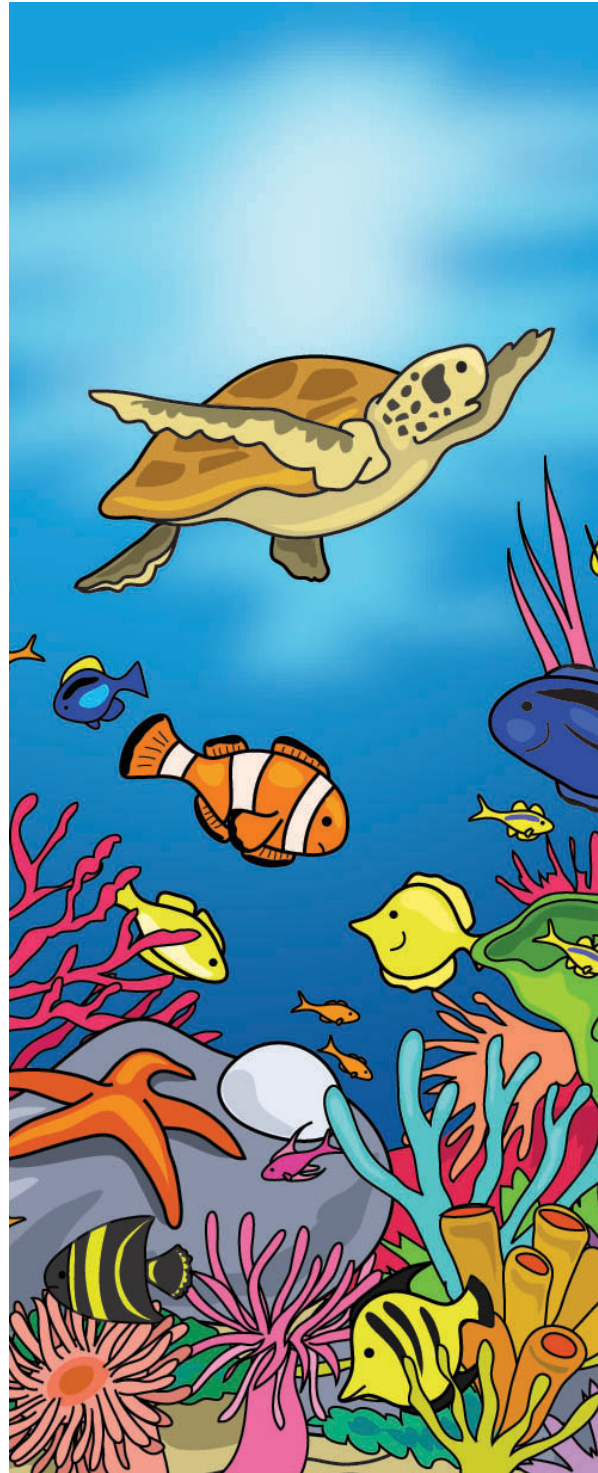


## Coral Reef by Clare Bevan

I am a teeming city;  
An underwater garden  
Where fishes fly;  
A lost forest  
of skeleton trees;  
A home for starry anemones;  
A hiding place for frightened fishes;  
A skulking place for prowling predators;  
An alien world  
Whose unseen monsters  
Watch with luminous eyes;  
An ancient palace topped by  
Improbable towers;  
A mermaid's maze;  
A living barrier built on  
Uncountable small deaths;  
An endlessly growing sculpture;  
A brittle mystery;  
A vanishing trick;  
A dazzling wonder  
More magical than all  
Your earthbound dreams;  
I am a priceless treasure;  
A precious heirloom,  
And I am yours

To love  
Or to lose  
As you choose.



<b>Name:</b>	<b>Class:</b>	<b>Date:</b>
--------------	---------------	--------------

1 Look at the first eight lines.  
**Find and copy** a word that means the same as *crowded*.

---

2a  
  
 1 mark

2 **Find and copy** the names of **two** kinds of creatures that live in the reef.

---

2b  
  
 1 mark

3 “A skulking place for prowling predators” In this phrase, which word is “skulking” closest in meaning to?  
 Choose **one**.

- dark
- lurking
- meeting
- safe

2a  
  
 1 mark

4 How is a reef different from our earthbound cities?  
 Give **two** impressions, using evidence from the text to support your answer.

---



---



---

2d  
  
 3 marks

5 Which of these does the poet say the reef is?  
 Choose **two**.

- an engine
- a predator
- a garden
- a sculpture
- a tree

2b  
  
 1 mark

6 What do the words “*precious heirloom*” (line 24) tell you about the poet’s attitude to the coral reef?

---



---

2g  
  
 2 marks