

WELCOME TO THE INCLUSION TEAM

Welcome to the Inclusion Team

Our staff, children and governors are proud to share that Garlinge Primary School and Nursery was awarded with the Inclusion Quality Mark Flagship Status in 2021. As an inclusive school we ensure that all children are catered for within the whole school community, with access to all areas of the curriculum. We have two Specialist Resource Provisions one for children with physical disabilities and one for autistic children. These spaces are allocated by the Local Authority through the EHCP review process. Our facilities include carefully designed care suites, a sensory area and disabled access throughout the school.

It is recognised that many children will experience a time when they may have an additional need during their primary school experience. This may take the form of a learning or an emotional need. Depending upon the need, a member of the Inclusion Team will assess and provide the necessary support to ensure that the child's needs are addressed.

Provision for Additional Educational Needs

Children who experience difficulties in learning are given extra support under the direction of the school's two SENDCos. Supporting adults provide intervention for individuals or small groups of children throughout the school under the guidance of the class teacher to break down barriers to learning. The progress of the children is carefully monitored and individual targets are written and reviewed termly.

The school keeps a register of children with Special Educational Needs & Disabilities (SEND). A child is placed on the SEND register if they require individualised support to meet their needs. This is decided in consultation with parents/carers and a letter is sent home to confirm this decision. Once a child is placed on the register their progress will be closely monitored and regular meetings will occur with the class teacher and the parents/carers of the child. These meetings include a discussion as to whether the child needs to remain on the SEND register or if further additional support is needed, such as involvement from external agencies. The SENDCos are available to support throughout this process if required.

Should you need advice or support please come and speak with one of our dedicated Inclusion Team members who will be happy to assist.



WELCOME TO THE INCLUSION TEAM - CONTINUED

Mrs Anna Northrop
Head of School



I am responsible for ensuring that all children at school have full access to the school curriculum and achieve their potential. I am also the Designated Safeguarding Lead for the school.

Mrs Sarah Bond
Assistant Headteacher/ Lead SENDCo,
Designated Teacher for Children in Care.

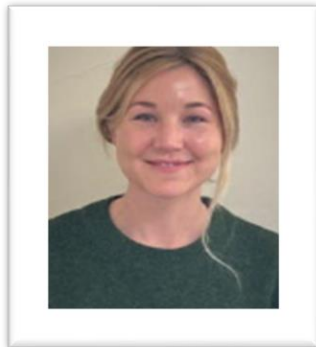


We are responsible for coordinating the support for all additional needs across the school to help our children access their learning and achieve their potential.

Mrs Lynne Moore
Teacher and SENDCo



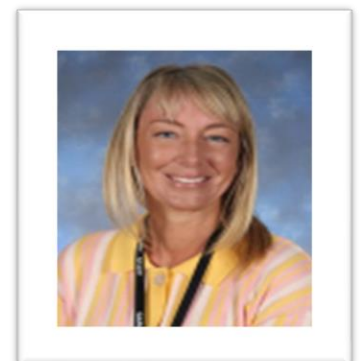
Mrs Amy Fairbrother
SRP Lead Teacher



I am the SRP Lead Teacher and have a specialist knowledge of Autism. I support the children to be successful in their learning environment and to develop their social and emotional well-being. I also advise teachers and supporting adults to meet the needs of the children within the classroom to ensure the greatest outcome of success.

Miss Sarah Illingworth
SRP Higher Level Teaching Assistant

I am the SRP Higher Level Teaching Assistant. I have specialist knowledge of speech and language and I lead interventions within the SRP for children with Autism. I work with teachers and teaching assistants to provide the best support for our ASC children that come to our class.



Inclusion Administration Assistants

Ms Mary Austen



We assist the Inclusion Team with administrative support. We will often be the first point of contact and will be able to direct you to the person who is able to support your child.

Mrs Sarah Ayling



Family Support Team

Mrs Ali Gillatt
Family Liaison Officer



Mrs Sarah Mansfield
Safeguarding Officer



Mrs Sarah van Vuuren
Safeguarding Assistant



We work closely with families across the school community and help to empower and encourage effective parenting to promote and support children's learning and well-being.

Mrs Jen Melloy
Welfare Officer

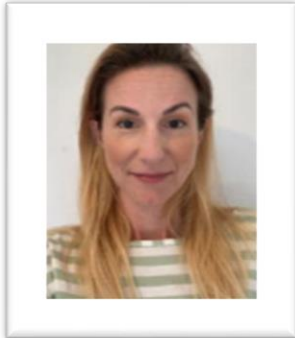


I lead our team of first aiders and work closely with some of our more vulnerable children and support families whose children may have complex medical needs.

I also ensure staff are trained in the medical needs for all our children.

Speech and Language Teaching Assistants

Lucy Wallis



We are Speech and Language Teaching Assistants who work across the school delivering group and 1:1 interventions to help support children with speech and language difficulties. We also work closely with the speech therapists that regularly come to the school.

Kelly Cooke

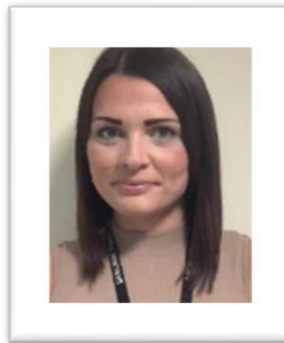


The Tree House Team

Janet Lotter
Learning Mentor
Drawing and Talking



Sarah Hallam
Learning Mentor
Lego Therapy

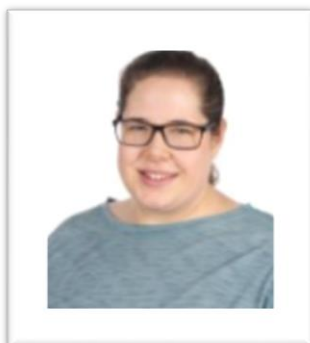


Charmaine Keeler
Emotional & Literacy
Support Assistant (ELSA)



The Tree House Team support the children with all aspects of school life. We help children develop friendships and have a particular focus on the well-being of our children and breaking down barriers to learning. Support is offered either in small groups or individually, as appropriate.

Miss Fauve Fendt
Nurture Practitioner



I plan, lead and evaluate our Nurture Intervention across the school. I support in assessing the learning and social emotional needs of our children and give help that is needed to remove the barriers to learning.

FAMILY LIAISON OFFICER

Dear Parents and Carers,

I would like to introduce myself to you and explain the role I have within the school as part of the school pastoral care team. My name is Ali Gillatt and I am the Family Liaison Officer at Garlinge Primary School and Nursery. My role is to offer support to you and your child with personal and school issues, for example:

- Family relationships
- Parenting issues
- Housing or benefit issues
- Advice and Support
- Challenging behaviour
- Attendance and punctuality
- Domestic violence
- Assistance with forms and letters
- Assistance/support with appointments at outside agencies
- Organising workshops for parents and children

These are just a few ways I can help and support you. It might be a large or small problem, or it might be a temporary situation. Whatever it is you need I will try to find an answer and if I cannot, I will find someone who can.

Confidentiality is an important factor and will always be observed (except for issues relating to Child Protection).

I hope you find this information helpful. Please do not hesitate to contact me both in person or via email gillatta@garlinge.kent.sch.uk if you require advice, support or information.

Most mornings I can be found on the KS1 playground otherwise please call into the school office and leave a message for me and I will be more than happy to ring you back.

My hours of work are:

Monday, Tuesday and Friday: 8:30am –12:30pm

Wednesday: 8:30am- 4:00pm

Thursday: 8:30am – 3:30pm

I look forward to supporting you and your family in the future.

Ali Gillatt
Family Liaison Officer